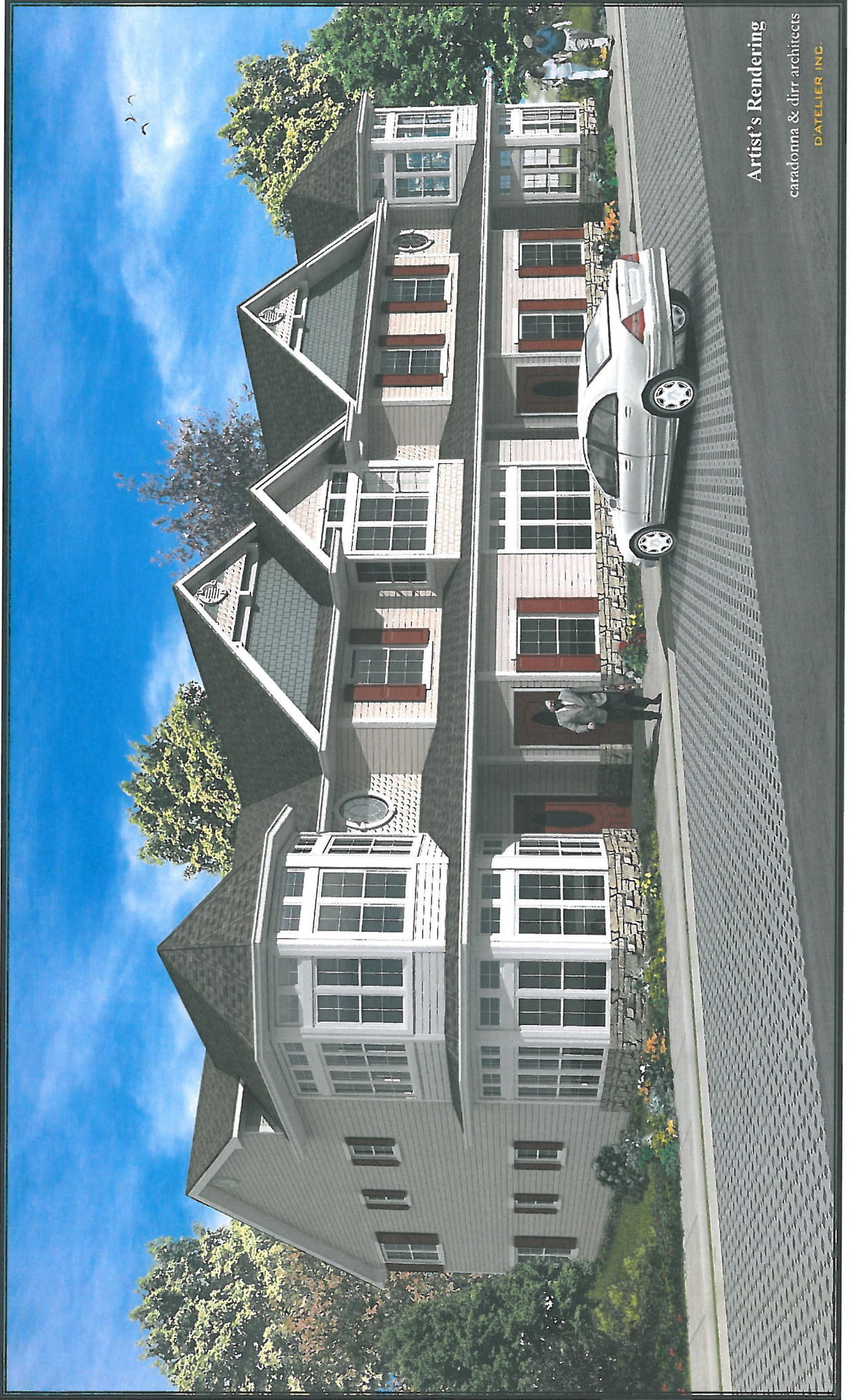




Stoneleigh Woods

A T C A R M E L



Artist's Rendering

caradonna & dirr architects
DATELIER INC.

The complete offering terms are in an Offering Plan available from the Sponsor. CD07-0162.

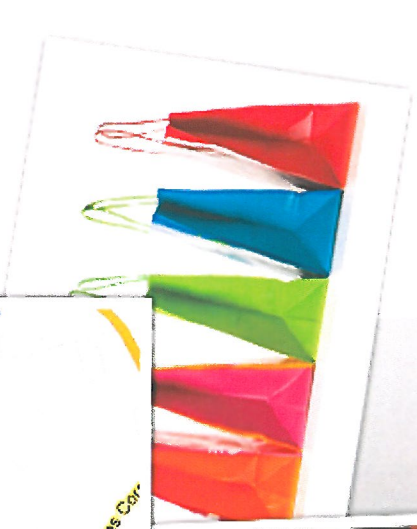
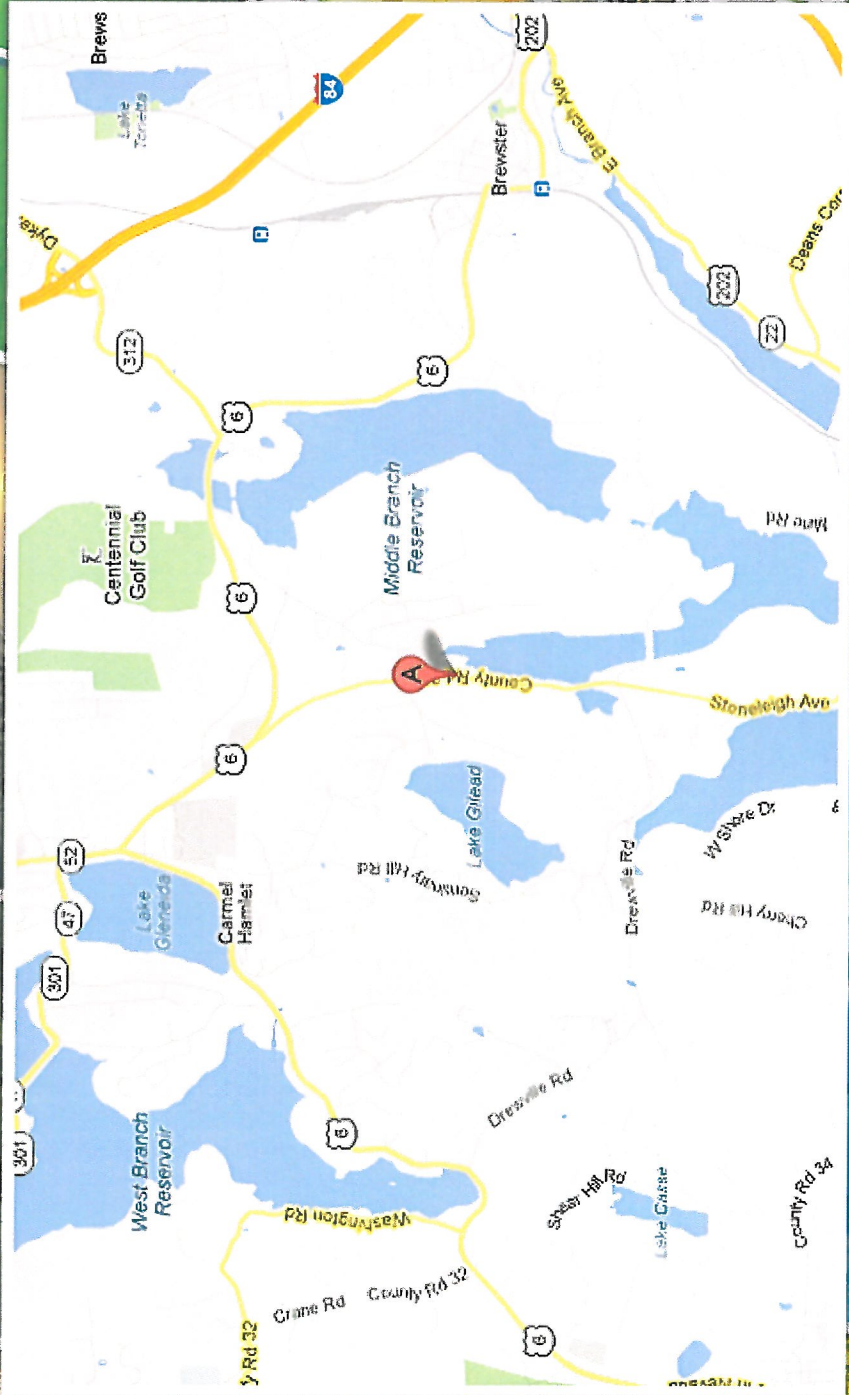
STONELEIGH WOODS AT CARMEL

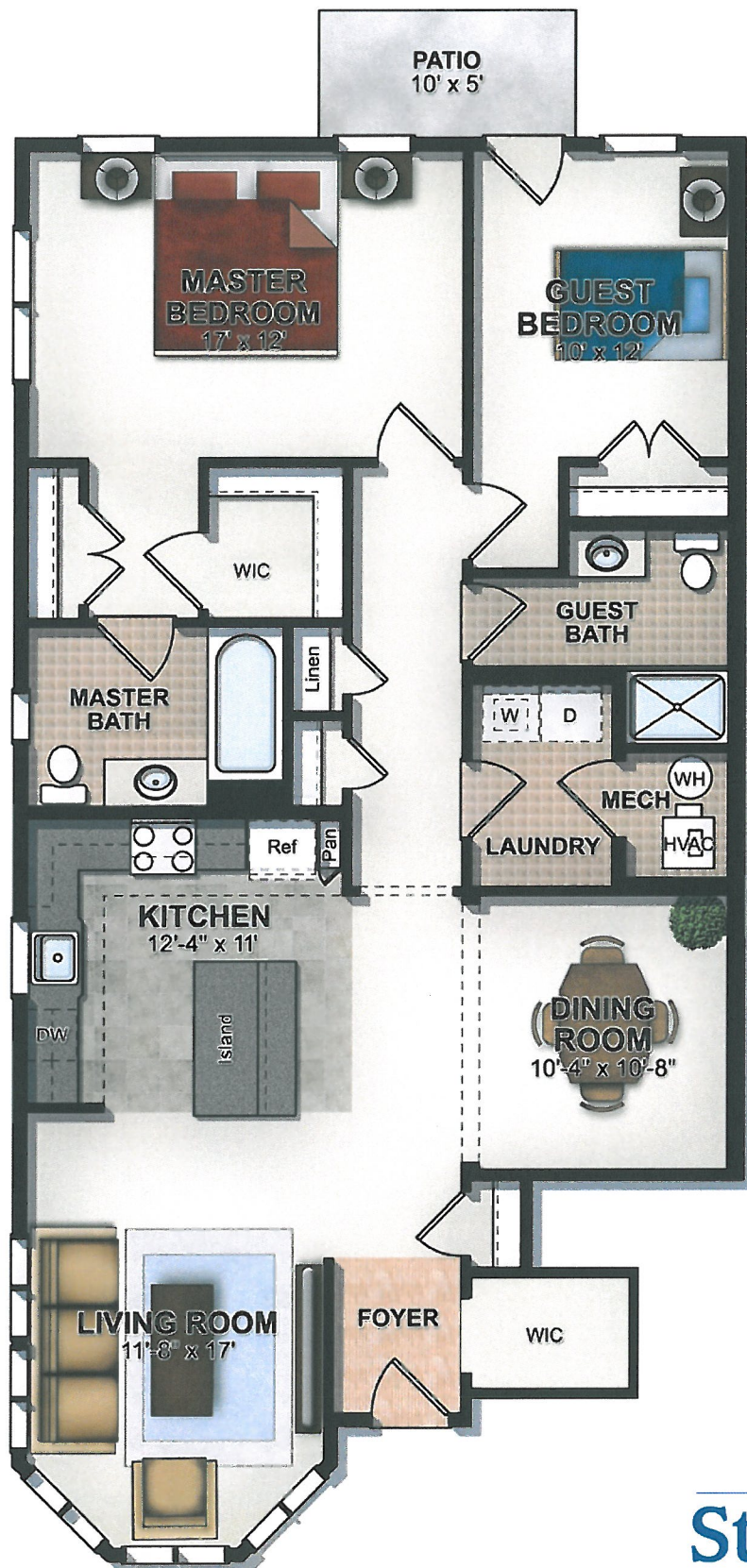


Artist's Rendering

*Penthouses in buildings 5 and 6 will not have rear decks

The complete offering terms are in an Offering Plan available from the Sponsor. CD07-0162.





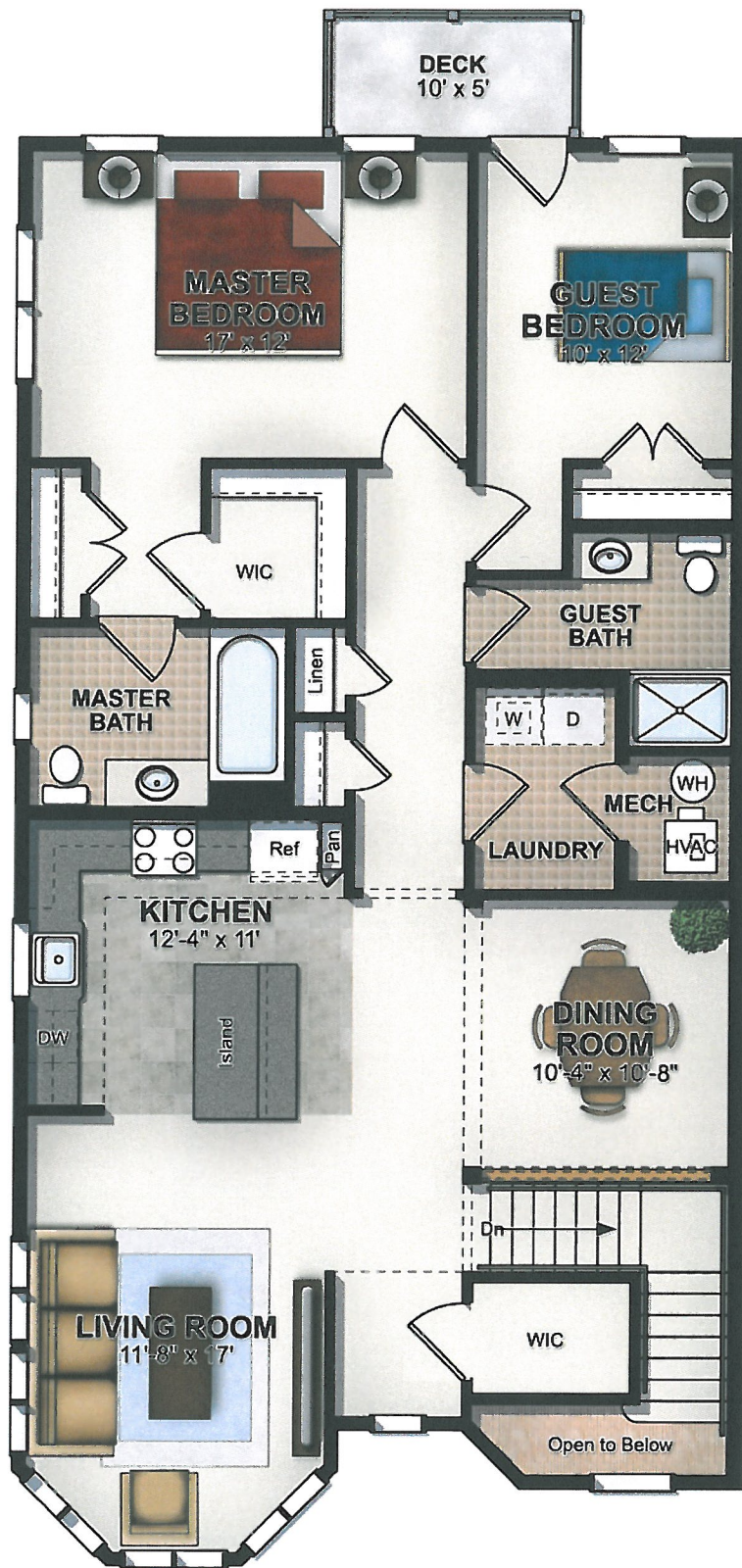
MAIN LEVEL



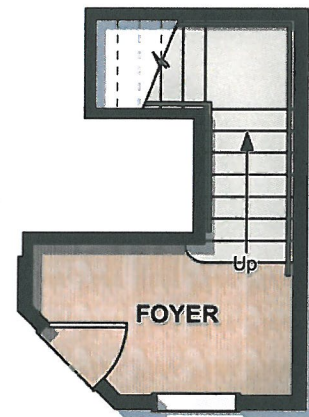
Victorian Villa

1,344 sq. ft.

The complete offering terms are in an Offering Plan available from the Sponsor. CD07-0162.



MAIN LEVEL



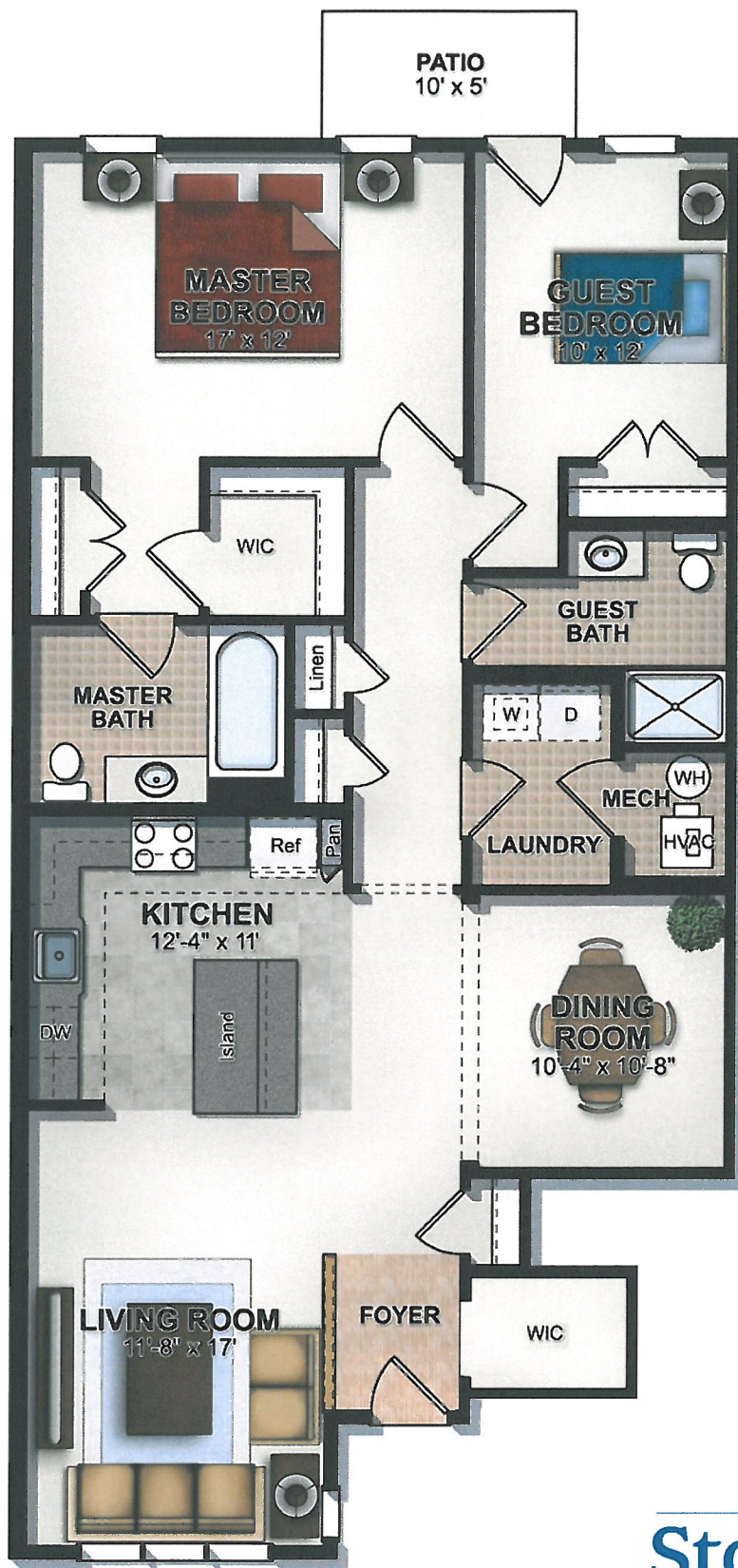
ENTRY LEVEL

Victorian Penthouse

1,492 sq. ft.

The complete offering terms are in an Offering Plan available from the Sponsor. CD07-0162.

*Penthouses in Buildings 5 and 6 will not have a deck



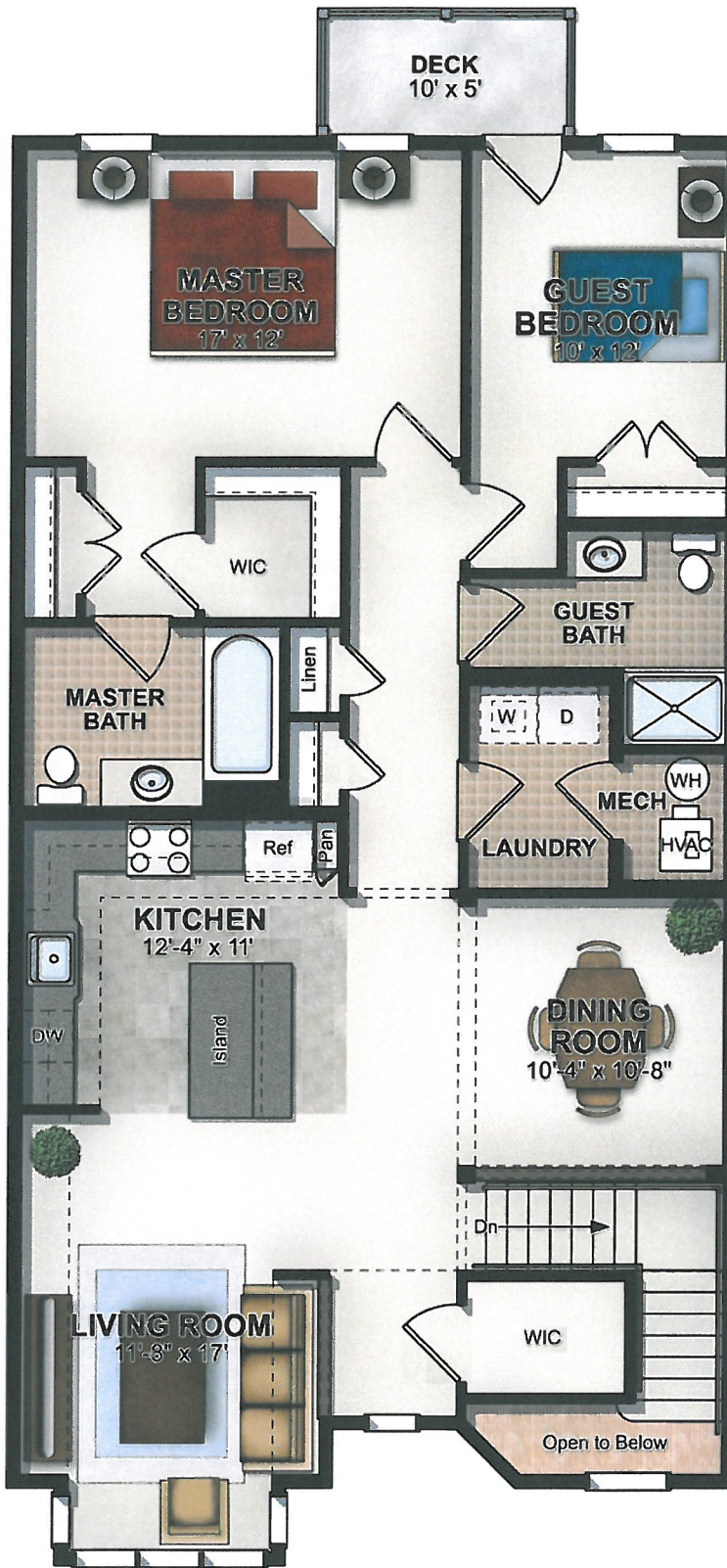
MAIN LEVEL



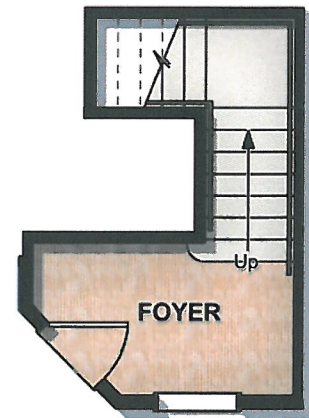
Colonial Villa

1,382 sq. ft.

The complete offering terms are in an Offering Plan available from the Sponsor. CD07-0162.



MAIN LEVEL



ENTRY LEVEL

Colonial Penthouse

1,519 sq. ft.

The complete offering terms are in an Offering Plan available from the Sponsor. CD07-0162.

*Penthouses in Buildings 5 and 6 will not have a deck

Stoneleigh Woods

Gold Package

Community Features

- ◆ Close to shopping, fine dining, fishing, golf, parks, & lakes
- ◆ Close to I-84, I-684 & Metro North RR
- ◆ Underground utilities
- ◆ Town water & sewer
- ◆ Fuel: natural gas & electric
- ◆ Professionally landscaped and maintained grounds
- ◆ Ground level rear paver stone patios or second floor zero-maintenance decks*
- ◆ Community street lighting
- ◆ Central mailbox location
- ◆ Spectacular upland views

Luxury Kitchen Appointments

- ◆ GE Appliance Package including: efficient electric glass top range, microwave, dishwasher, and frost-free refrigerator/freezer with ice maker (optional colors & refrigerator models available)
- ◆ *Merillat Classic*® 30" designer cabinets
- ◆ Formica countertops with 4" backsplash
- ◆ Ceramic tiles in the kitchen
- ◆ Designer stainless steel sink

Designer Bathroom Appointments

- ◆ Cultured marble tops with integrated sink
- ◆ *Sterling by Kohler*® Comfort height toilets in all bathrooms
- ◆ 8 x 8 ceramic floor tiles
- ◆ *Sterling by Kohler*® 6' soaking tub w/shower enclosure in Master Bath with 6 x 6 tiled walls
- ◆ *Sterling by Kohler*® shower pan in Guest Bath with 6' 6 x 6 tiled walls
- ◆ *Moen*® polished chrome faucets in all bathrooms
- ◆ *Merillat Classic*® vanities

The Community Center

- ◆ Grand one-story building more than 2,100 square feet in area featuring a great room with gas fireplace, exercise room, mail room, fully equipped kitchen, and men's & women's restrooms

*Penthouses in buildings 5 & 6 will not have a rear deck.

**Penthouses in buildings 5 & 6 will not have an exterior outlet in the rear of the home

Note: Included features subject to change without notice.

Energy Efficient Package for Comfort and Peace of Mind

- ◆ *Silverline*® by Anderson Insulated, double-pane, tilt-out, low E glass windows with architectural grid
- ◆ R-30 insulation in the ceiling
- ◆ R-19 insulation in the exterior walls
- ◆ R-19 insulation between floors
- ◆ 1" thick sound absorbing poured Gyp-crete® between floors
- ◆ 1/2" thick sound board between floors
- ◆ R-13 insulation in the party walls
- ◆ *Carrier*® high efficiency central air conditioning
- ◆ *Carrier*® high efficiency natural gas fired furnace
- ◆ *Honeywell*® Programmable thermostat
- ◆ high efficiency water heater
- ◆ Weather stripping on all exterior doors
- ◆ *Florence Exclusive*® exterior wind and vapor shield applied to sheathing

Additional Features

- ◆ GE Washer & Dryer included
- ◆ FULL 1400-SQFT WALKOUT BASEMENTS (First Floor models in Bld 8 and 9 only)
- ◆ Cast-in place concrete foundations
- ◆ Architectural roof shingles w/30 year guarantee
- ◆ Certain Teed double 4" vinyl siding.
- ◆ Aluminum gutters and leaders
- ◆ Blue & Gold exclusive interior trim package
- ◆ Colonial-style insulated entry doors
- ◆ Ceramic tiles in the Foyer
- ◆ Raised panel interior Colonial-style doors
- ◆ Abundant closets with vinyl coated wire shelving systems
- ◆ Laundry room with GE washer & dryer, ceramic tiles & vinyl coated wire shelf
- ◆ Wall to wall carpeting with 7/16" padding in living areas
- ◆ Benjamin Moore paint used exclusively interior & exterior
- ◆ One exterior light fixture outside each entry door
- ◆ Ceiling fan pre-wire in master bedroom & living room, chandelier pre-wire in dining room
- ◆ Pre-wired cable and telephone jacks in the living room, bedrooms, and kitchen
- ◆ 150 amp electrical service
- ◆ Fire suppression system & 2-hour firewalls
- ◆ Smoke and carbon monoxide detectors
- ◆ One exterior outlet on the rear of the home**
- ◆ Front door chime

See for yourself how living at Stoneleigh Woods will save you big bucks each and every year

Stoneleigh Woods at Carmel

	Monthly	Yearly
Maintenance Fee	\$ 216	\$ 2,592
<i>Includes:</i> Snow Removal Landscaping, Lawn sprinklers, Exterior Insurance,* Garbage Removal, Roof & Siding repairs		
Electric	\$ 70*	\$ 840
Gas	\$ 70*	\$ 840
Taxes	\$ 367	\$ 4,400
Total	\$ 723	\$8,672

*Actual utility bill may vary. Figures based on an average of actual utility costs.
Does not include content insurance.

Your Current Home

	Monthly	Yearly
Snow Removal		
Landscaping		
Lawn Sprinklers		
Insurance		
Roof/Siding Repairs		
Other Maint items		
Electric		
Fuel (Oil/Gas)		
Taxes		
Total		